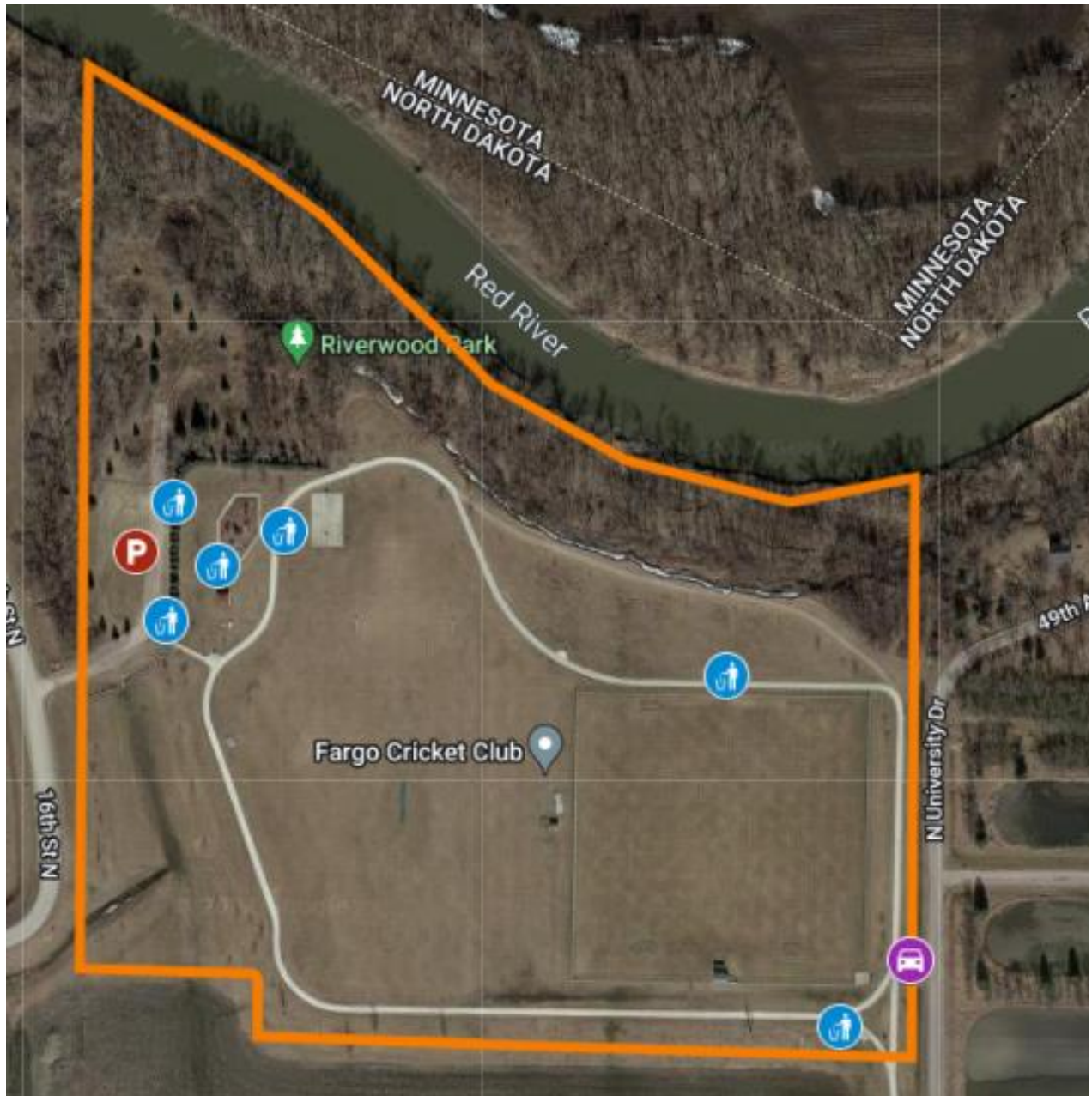


## Volunteer Cleanup Sections and Maps

Section	Location	Status
1	<u>Riverwood</u> 4707 County Road 31, Fargo, ND	Adopted
2	<u>County Road 20 Trail</u> 3600 Broadway North, Fargo, ND	
3	<u>Trollwood</u> 3664 Elm St N, Fargo, ND	Adopted
4	<u>El Zagal &amp; Trefoil</u> 1321 Elm St N, Fargo, ND	Adopted
5	<u>Jack Williams &amp; Mickelson</u> 1137 Elm St N, Fargo, ND	
6	<u>Oak Grove &amp; Wildflower</u> 9 Lower Terrace, Fargo, ND	Adopted
7	<u>2nd St &amp; 4th Ave to Main Ave</u> 105 3rd St N, Fargo, ND	Park staff maintaining
8	<u>Dike East</u> 310 4th St S, Fargo, ND	
9	<u>Red River Trail Dike East</u> 310 4th St S, Fargo, ND	
10	<u>Red River Trail Ponte's</u> 305 Lindenwood Drive S, Fargo, ND	
11	<u>Lindenwood</u> 1905 Roger Maris Drive, Fargo, ND	Park staff maintaining
12	<u>Lemke Park</u> 120 32 <sup>nd</sup> Ave S, Fargo, ND	
13	<u>Lions Conservancy</u> 1221 El Cano Drive, Fargo, ND	Adopted
14	<u>Iwen Park</u> 1209 52nd Ave S, Fargo, ND	
15	<u>Bison Meadows</u> 6470 19 St S, Fargo, ND	
16	<u>Rabanus Park</u> 6470 19 St S, Fargo, ND	
17	<u>Orchard Glen</u> 7606 Forest River Rd S, Fargo, ND	
18	<u>Forest River</u> 115 Forest River Rd S, Fargo, ND	
19	<u>Heritage Hills</u> 814 Heritage Cir S, Fargo, ND	

## Section 1



### Section 1- Riverwood Park

4707 County Road 31, Fargo, ND

The Park is located on the North end of Fargo along the Red River.



Drop Off area



Parking Area



Section Boundary

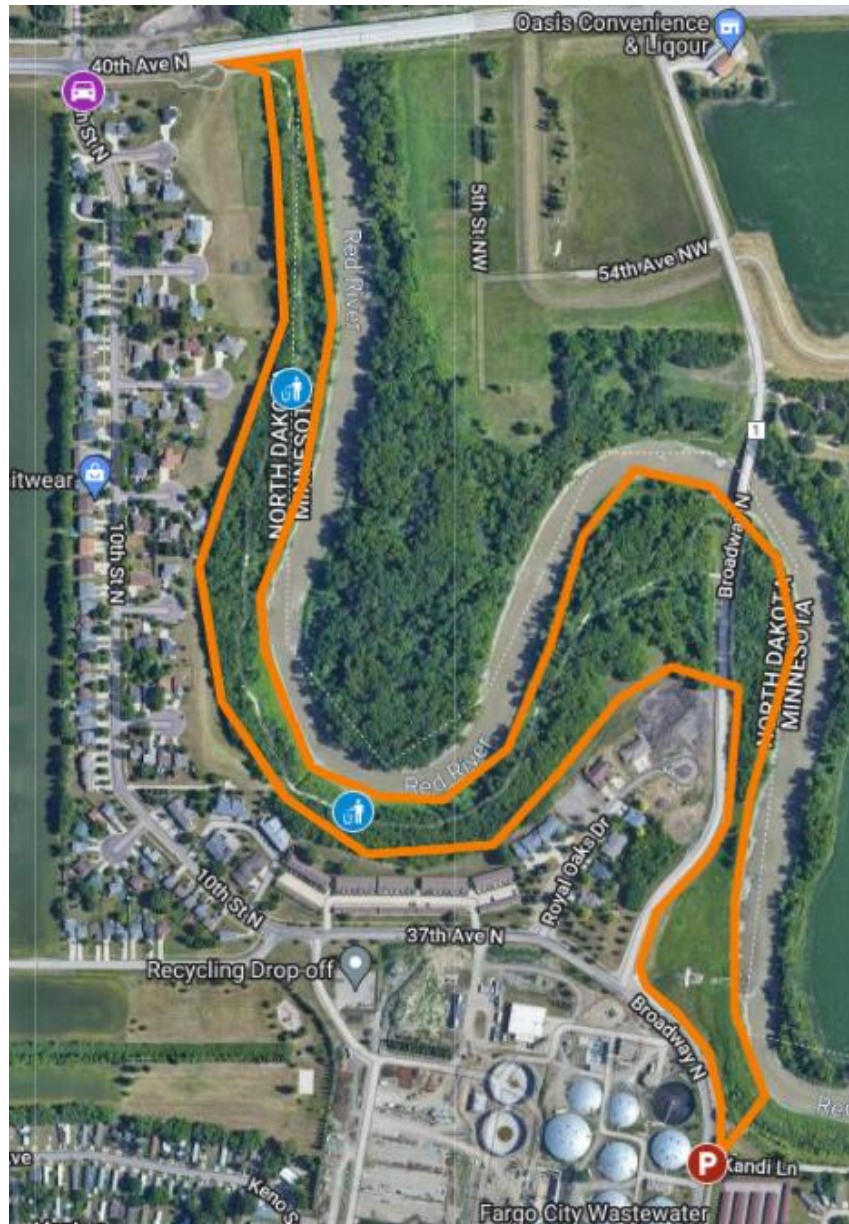
It is recommended that volunteers get dropped off on the east end of Riverwood and park on the west end in the parking lot.



Garbage Cans

Garbage should be placed in the garbage cans throughout the park or in a bag next to the cans.

## Section 2



### Section 2- County Road 20 Trail

3600 Broadway North, Fargo, ND

County Road 20 Trail is located on the north end of Fargo just south of the 40<sup>th</sup> Ave North Bridge and runs along the Red River.



Drop Off area



Parking Area



Section Boundary

It is recommended that volunteers get dropped off on the north end of the trail on 10<sup>th</sup> St North and park their vehicles at the south end of the trail on Kandi Lane.



Garbage Cans

Garbage should be placed in the garbage cans throughout the park or in a bag next to the cans.



## Section 3



### Section 3- Trollwood

3664 Elm St N, Fargo, ND

Trollwood Park is located on the north end of Fargo. It has a Frisbee golf course and a trail that runs along the Red River.



Parking Area



Section Boundary

It is recommended that volunteers park in the main parking lot and work around the park from there.

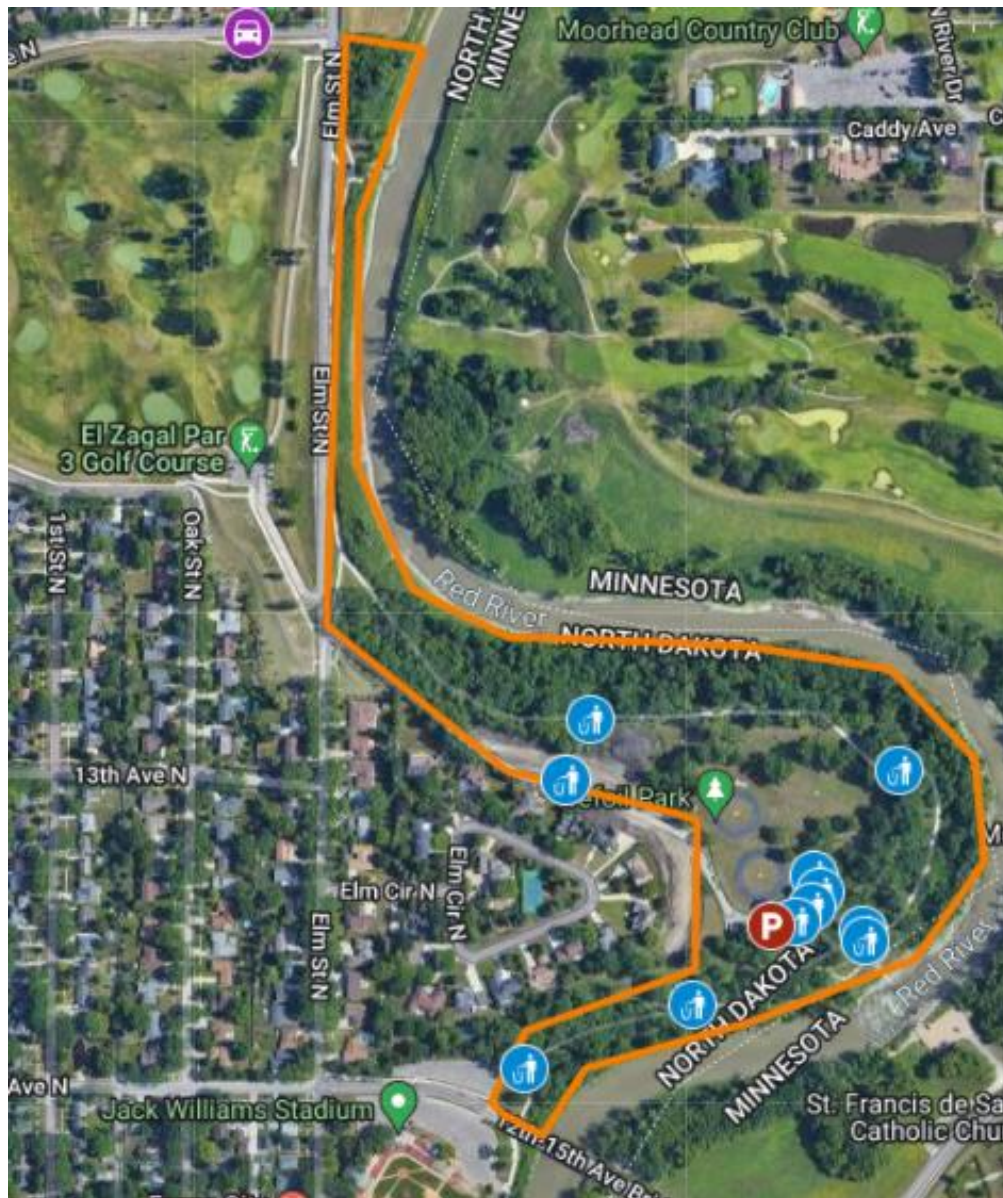


Garbage Cans

Garbage should be placed in the garbage cans throughout the park or in a bag next to the cans.



## Section 4



### Section 4- El Zagal & Trefoil

1321 Elm St N, Fargo, ND

Trefoil Park is located in north Fargo just east of El Zagal golf course, with a trail that runs along the Red River.



Drop Off area



Parking Area



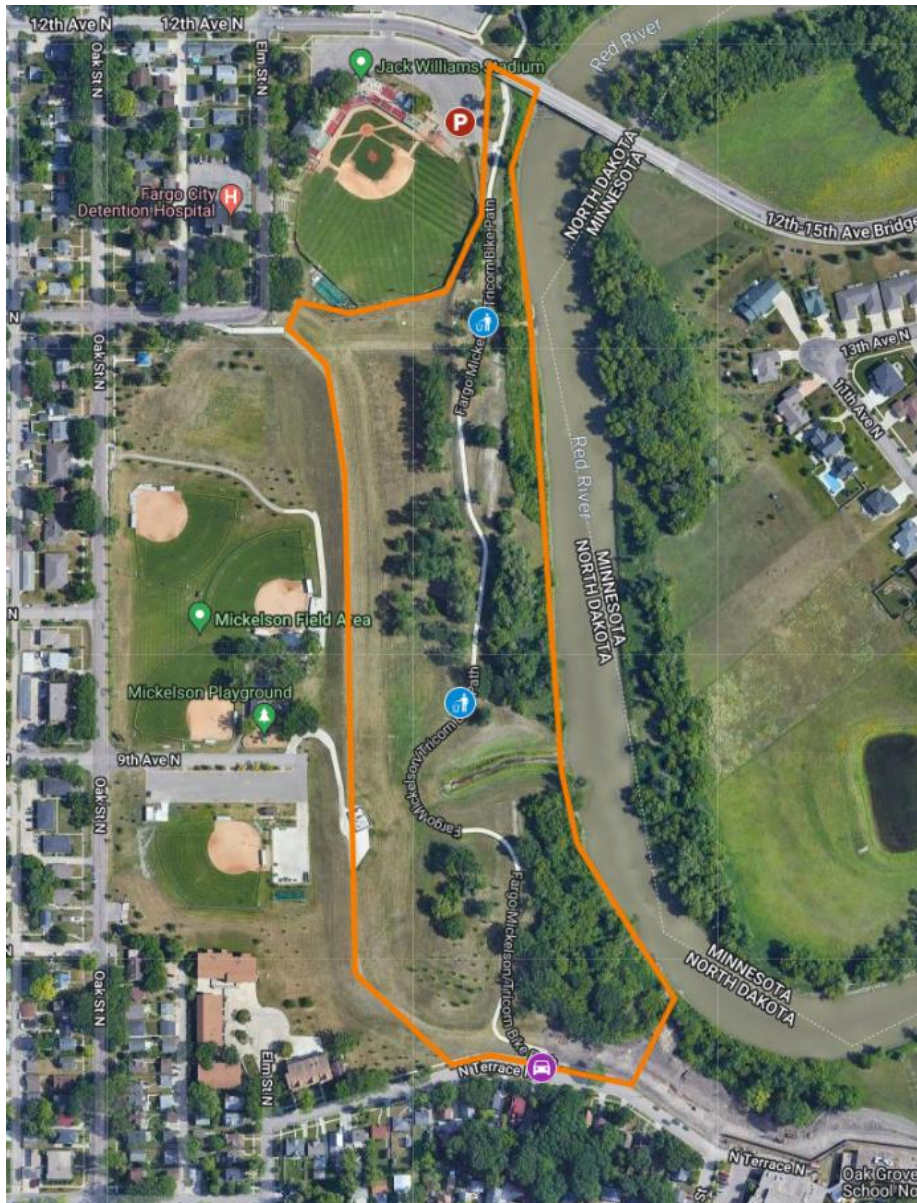
Section Boundary



Garbage Cans

Garbage should be placed in the garbage cans throughout the park or left in a tied garbage bag next to the cans.

## Section 5



### Section 5- Jack Williams & Mickelson

1137 Elm St N, Fargo, ND

Mickelson Park is located in north Fargo just south of Jack Williams Stadium, with a trail that runs along the Red River.



Drop Off area



Parking Area



Section Boundary

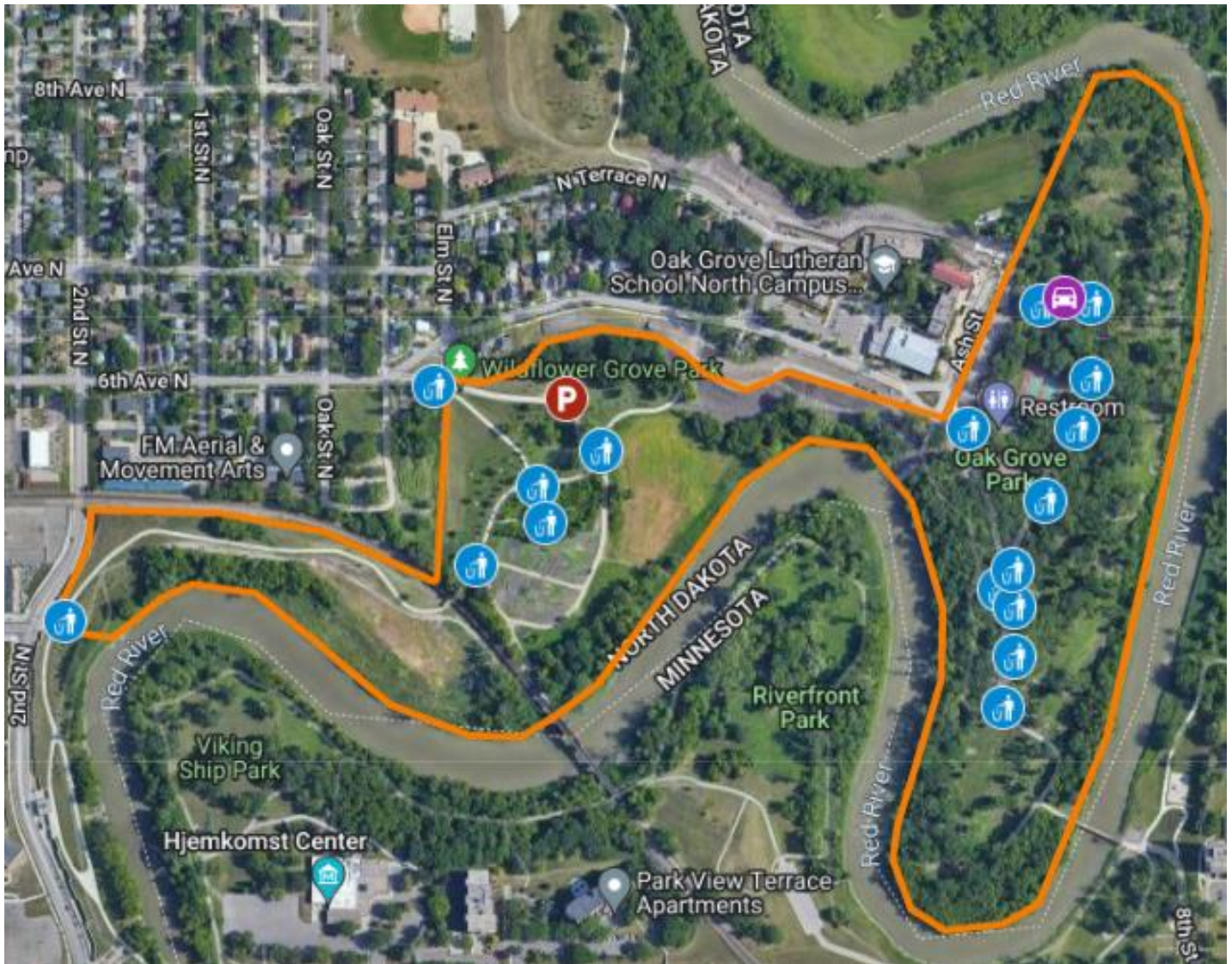


Garbage Cans

Garbage should be placed in the garbage cans throughout the park or left in a tied garbage bag next to the cans.



## Section 6



### Section 6- Oak Grove & Wildflower

#### 9 Lower Terrace, Fargo, ND

Oak Grove Park is located in north Fargo just east of Oak Grove School, with a trail system that runs along the Red River and through Wildflower Park.



Drop Off area



Parking Area



Section Boundary

It is recommended that volunteers get dropped off at the north end of Oak Grove Park and park their vehicles in the Wildflower parking lot.



Garbage Cans

Garbage should be placed in the garbage cans throughout the park or left in a tied garbage bag next to the cans.



## Section 7



### Section 7- 2<sup>nd</sup> St & 4<sup>th</sup> Ave to Main Ave

105 3rd St N, Fargo, ND

This trail section is located north of the Main Ave Bridge, with a trail system that runs north along the Red River.



Drop Off area



Parking Area



Section Boundary

It is recommended that volunteers get dropped off at in the parking lot on Northern Pacific Ave (this is not a Park District parking lot) and park on 1<sup>st</sup> Ave North or a nearby street.



Garbage Cans

Garbage should be placed in the garbage cans throughout the park or left in a tied garbage bag next to the cans.



## Section 8



### Section 8- Dike East

310 4th St S, Fargo, ND

From Main Ave to Mid-town Dam

Dike East is located south of the Main Ave Bridge, with a trail system that runs south along the Red River.



Parking Area



Section Boundary

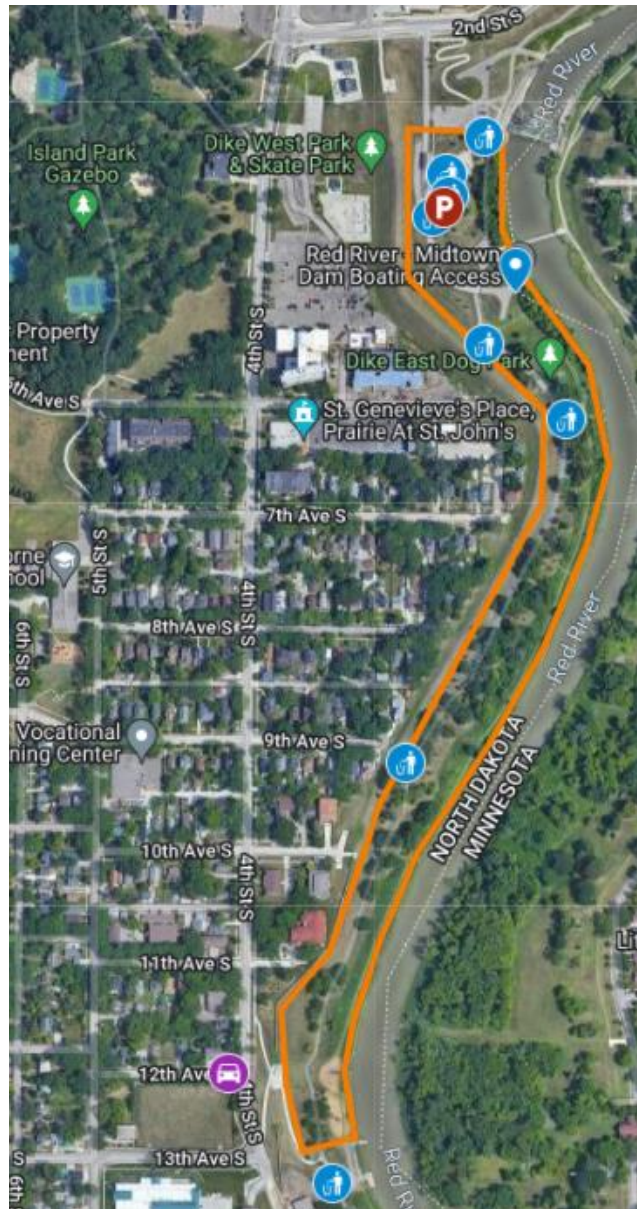
It is recommended that volunteers park in the main parking lot and work around the park from there.



Garbage Cans

Garbage should be placed in the garbage cans throughout the park or left in a tied garbage bag next to the cans.

## Section 9



### Section 9- Red River Trail Dike East

310 4th St S, Fargo, ND

This trail section is located south of Dike East, with a trail system that runs south along the Red River to 13<sup>th</sup> Ave South.



Drop Off area



Parking Area



Section Boundary

It is recommended that volunteers get dropped off at the south end of the trail on 12<sup>th</sup> Ave South and park their vehicles at Dike East.

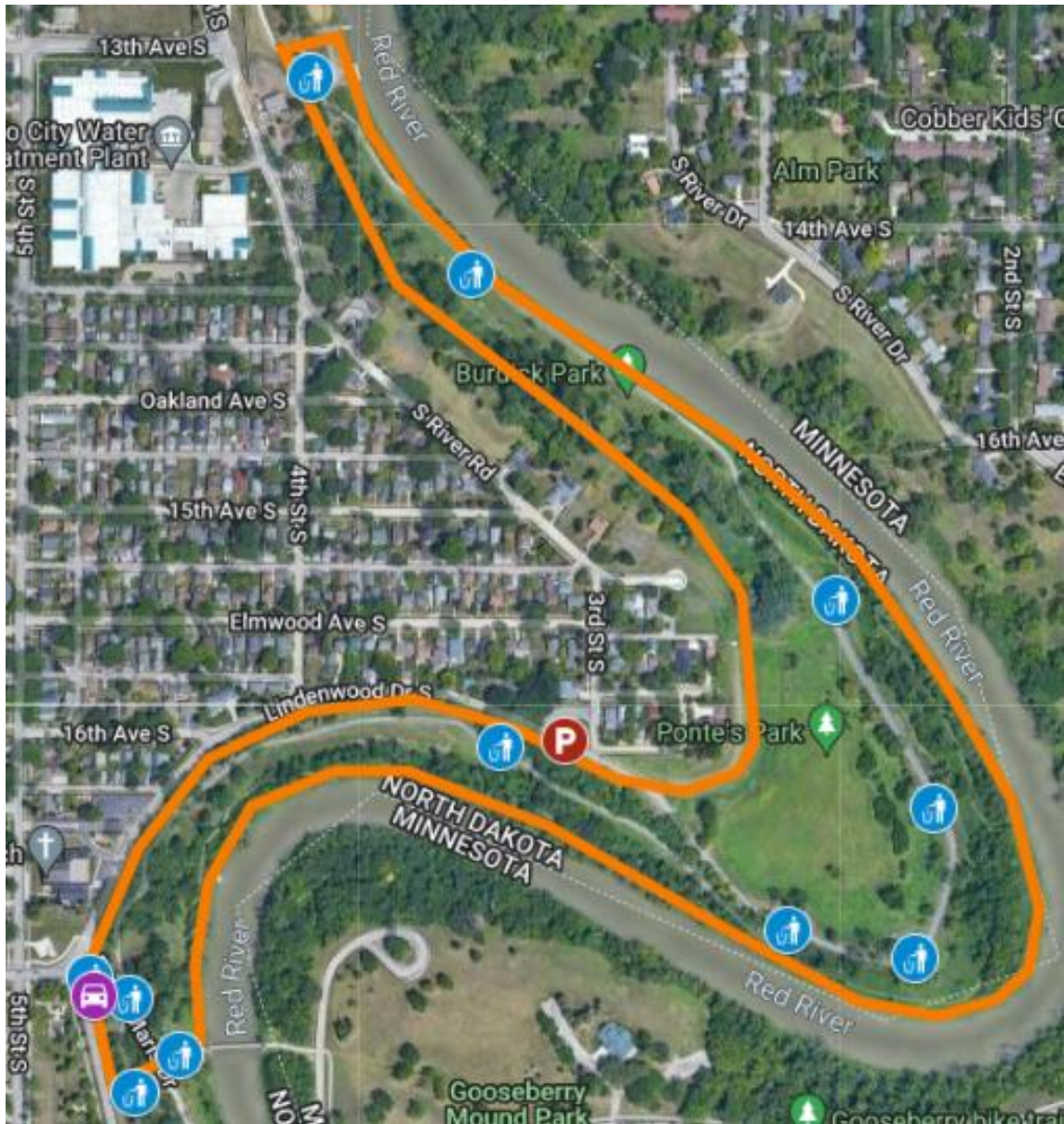


Garbage Cans

Garbage should be placed in the garbage cans throughout the park or left in a tied garbage bag next to the cans.



## Section 10



### Section 10- Red River Trail Ponte's Park

305 Lindenwood Drive S, Fargo, ND

This trail section is located north of Lindenwood Park and runs north along the Red River to 13<sup>th</sup> Ave South.



Drop Off area



Parking Area



Section Boundary

It is recommended that volunteers get dropped off at the south end of the trail on 17<sup>th</sup> Ave South and park their vehicles at the Ponte's Park trail entrance.

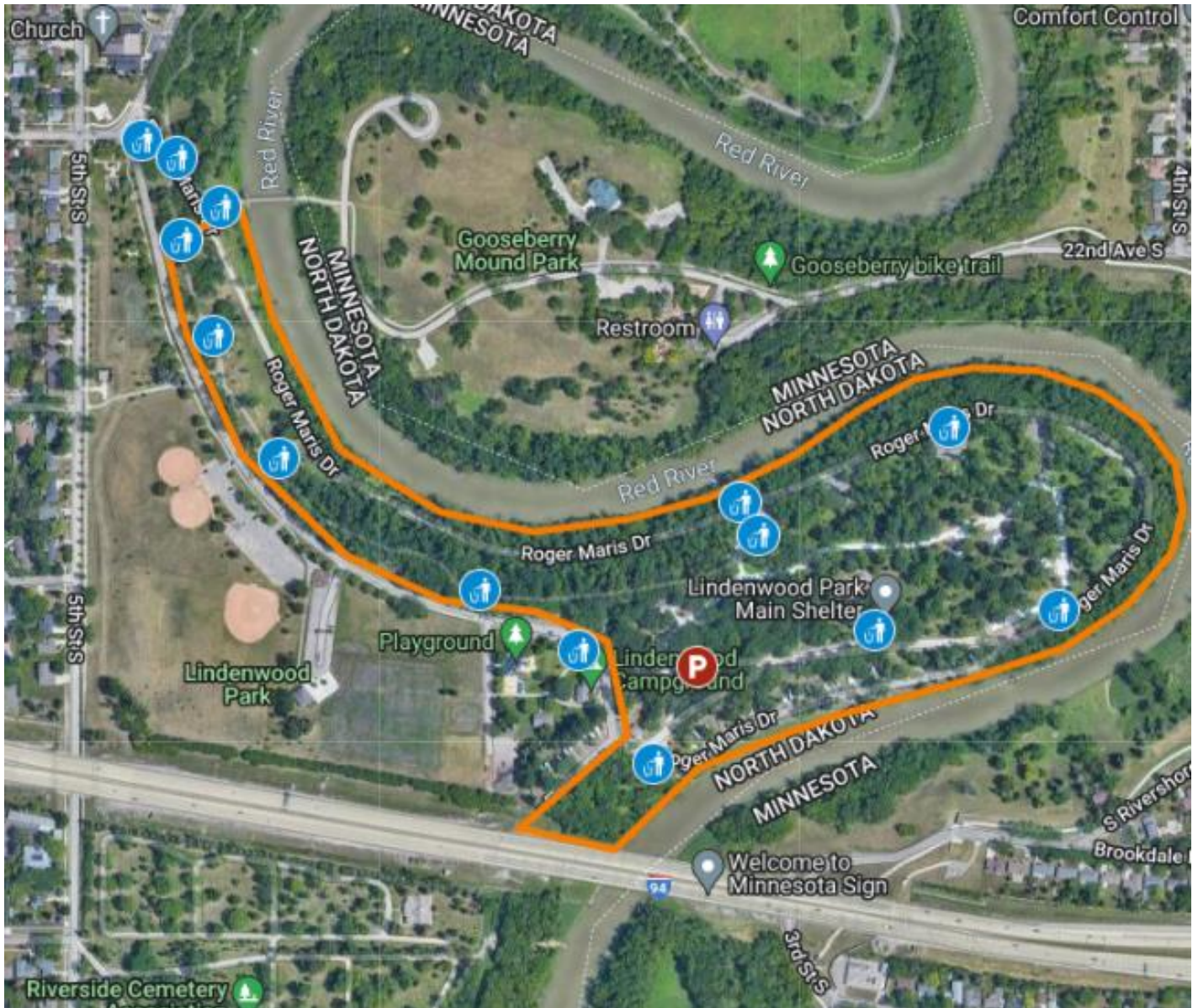


Garbage Cans

Garbage should be placed in the garbage cans throughout the park or left in a tied garbage bag next to the cans.



## Section 11



### Section 11- Lindenwood

1905 Roger Maris Drive, Fargo, ND

Lindenwood Park is located in south Fargo just north of I-94, with a trail system that runs throughout the park and along the Red River.



Parking Area



Section Boundary

It is recommended that volunteers park in the parking area along the main road in Lindenwood and work around the park from there.



Garbage Cans

Garbage should be placed in the garbage cans throughout the park or left in a tied garbage bag next to the cans.



## Section 12



### Section 12- Lemke Park

120 32<sup>nd</sup> Ave S, Fargo, ND

Lemke Park is located in south Fargo just south of 32<sup>nd</sup> Ave, with a trail system that runs through the park and along the Red River.



Parking Area



Section Boundary

It is recommended that volunteers park in the Lemke parking lot and work around the park from there.

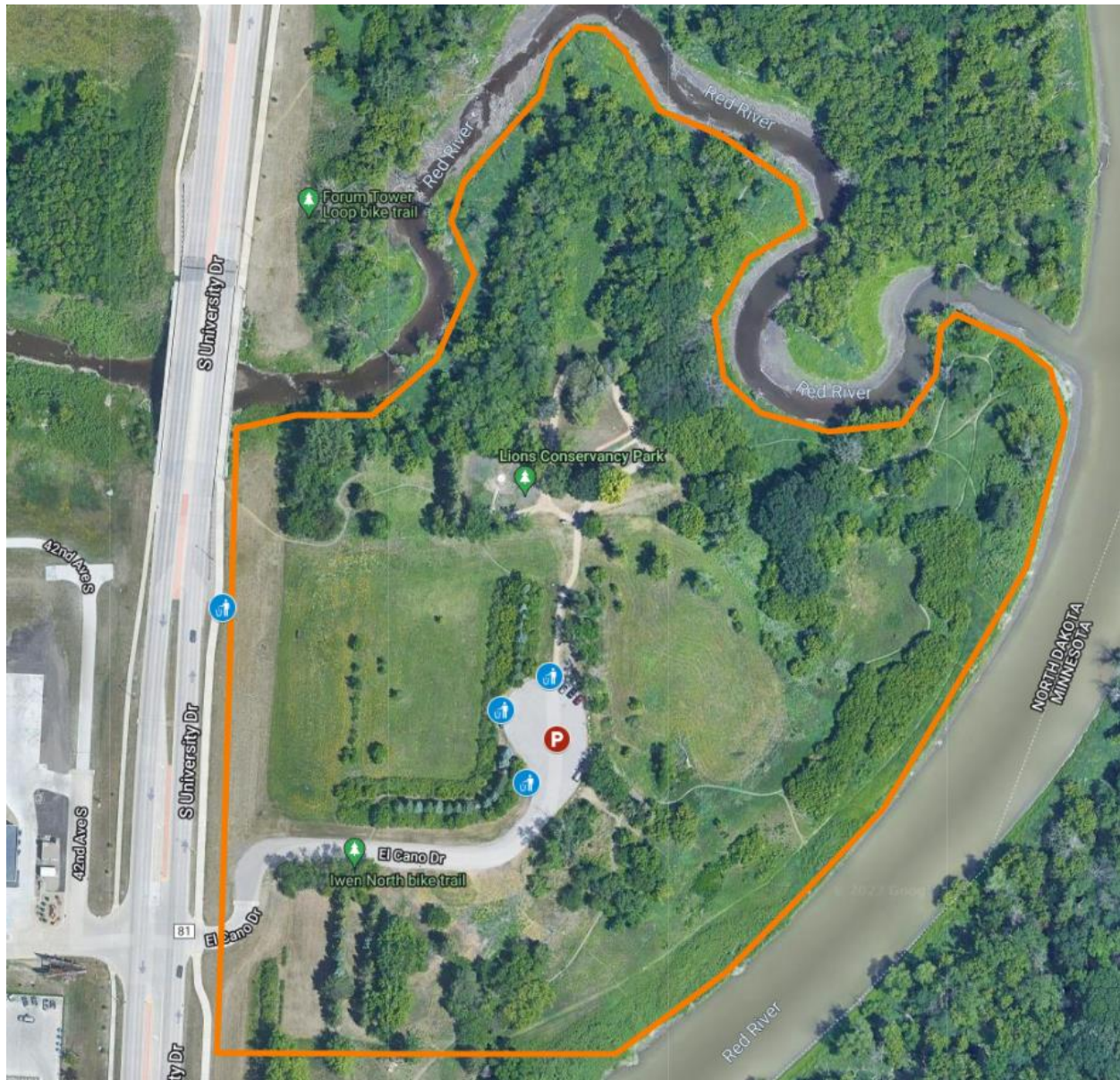


Garbage Cans

Garbage should be placed in the garbage cans throughout the park or left in a tied garbage bag next to the cans.



## Section 13



### Section 13- Lions Conservancy

1221 El Cano Drive, Fargo, ND

Lions Conservancy Park is located in south Fargo with a trail system that runs through the park and along the Red River.



Parking Area



Section Boundary

It is recommended that volunteers park in the Lions Conservancy parking lot and work around the park from there.

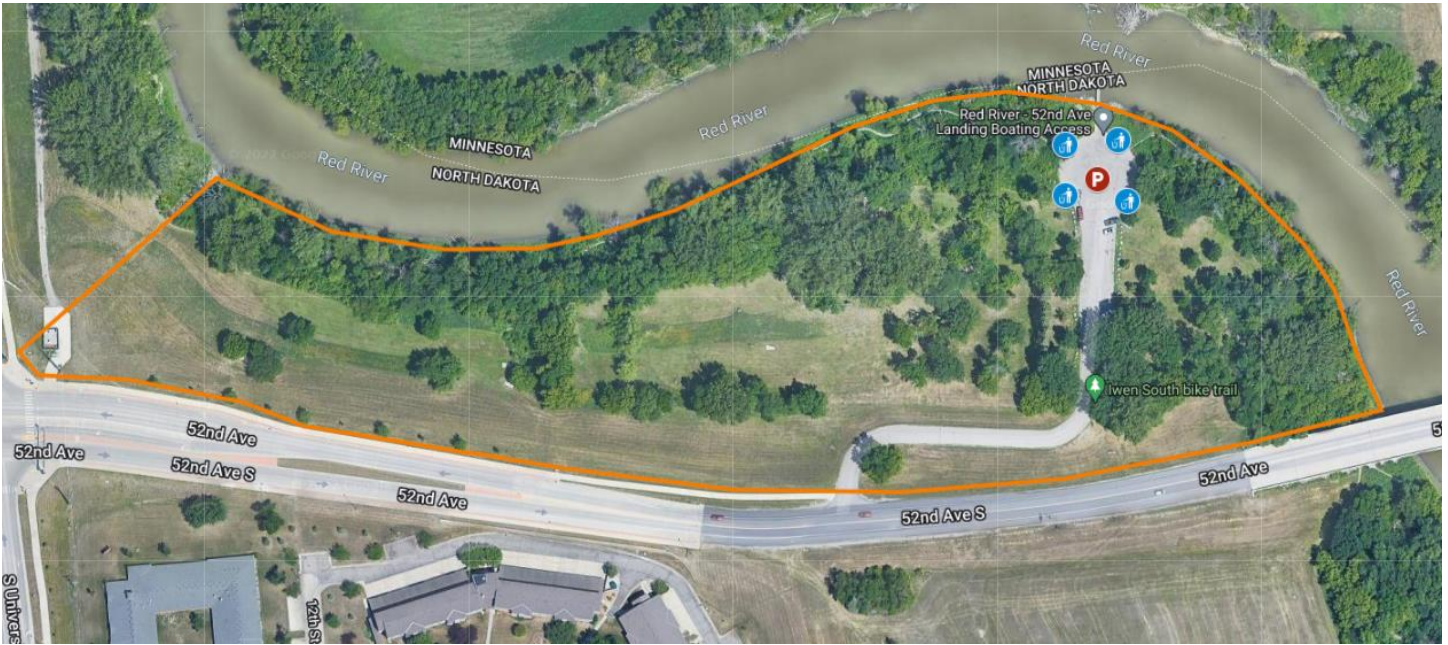


Garbage Cans

Garbage should be placed in the garbage cans throughout the park or left in a tied garbage bag next to the cans.



## Section 14



### Section 14- Iwen Park

1209 52nd Ave S, Fargo, ND

Iwen Park is located in south Fargo just north of the 52<sup>nd</sup> Ave Bridge. It has a Frisbee golf course and a trail that runs along the Red River.



Parking Area



Section Boundary

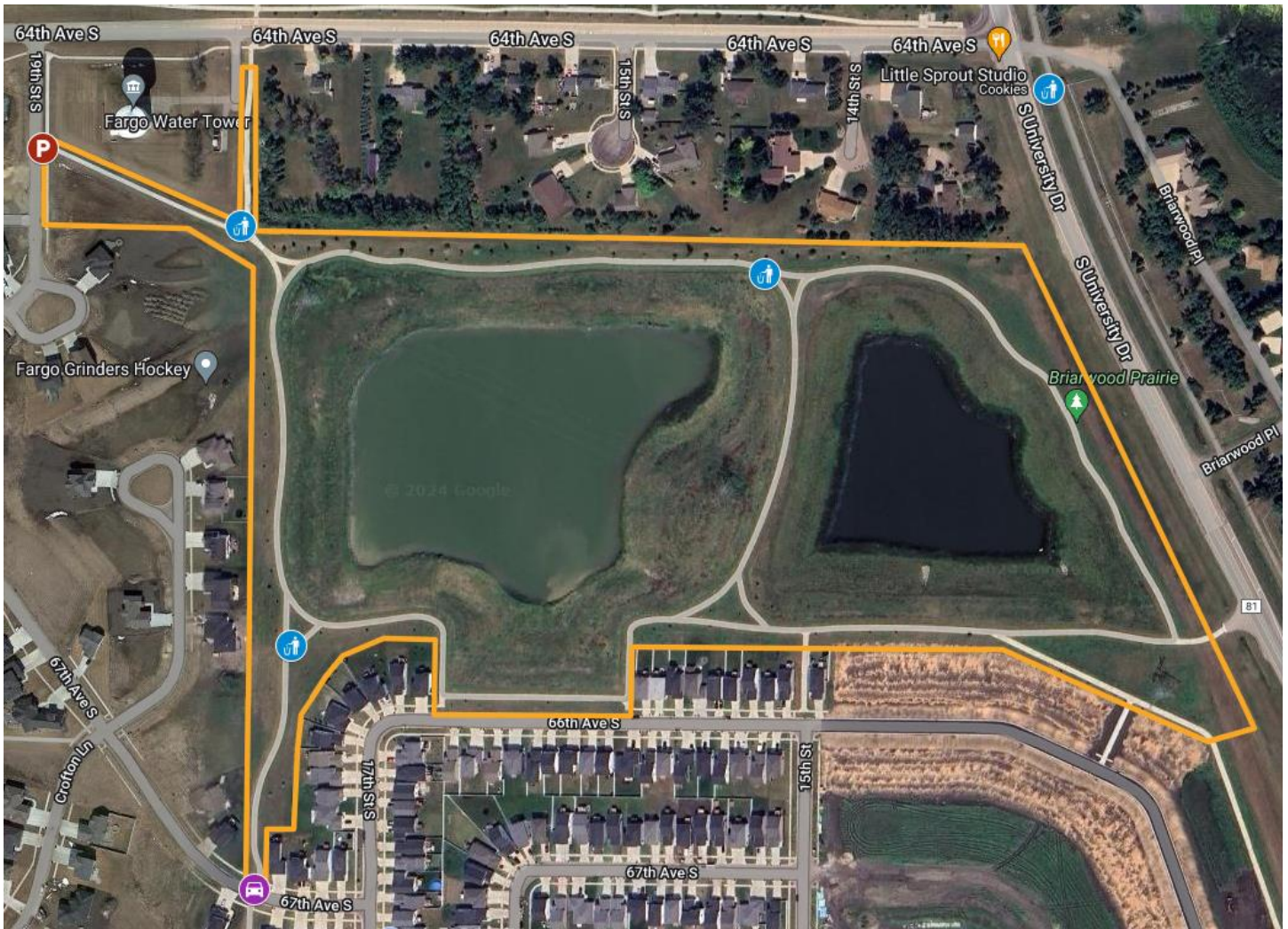
It is recommended that volunteers park in the Iwen parking lot and work around the park from there.



Garbage Cans

Garbage should be placed in the garbage cans throughout the park or left in a tied garbage bag next to the cans.

## Section 15



### Section 15- Bison Meadows

6470 19 St S, Fargo, ND

Bison Meadows is located in south Fargo just south of the 64<sup>th</sup> Ave S with the east end along South University Dr. It has trails that goes around 2 large ponds and with native grasses.



Drop Off area



Parking Area



Section Boundary

It is recommended that volunteers park along 19<sup>th</sup> St S and work around the park from there. Volunteers can also get dropped off on the south end of the park where the trail crosses 67<sup>th</sup> Ave S.

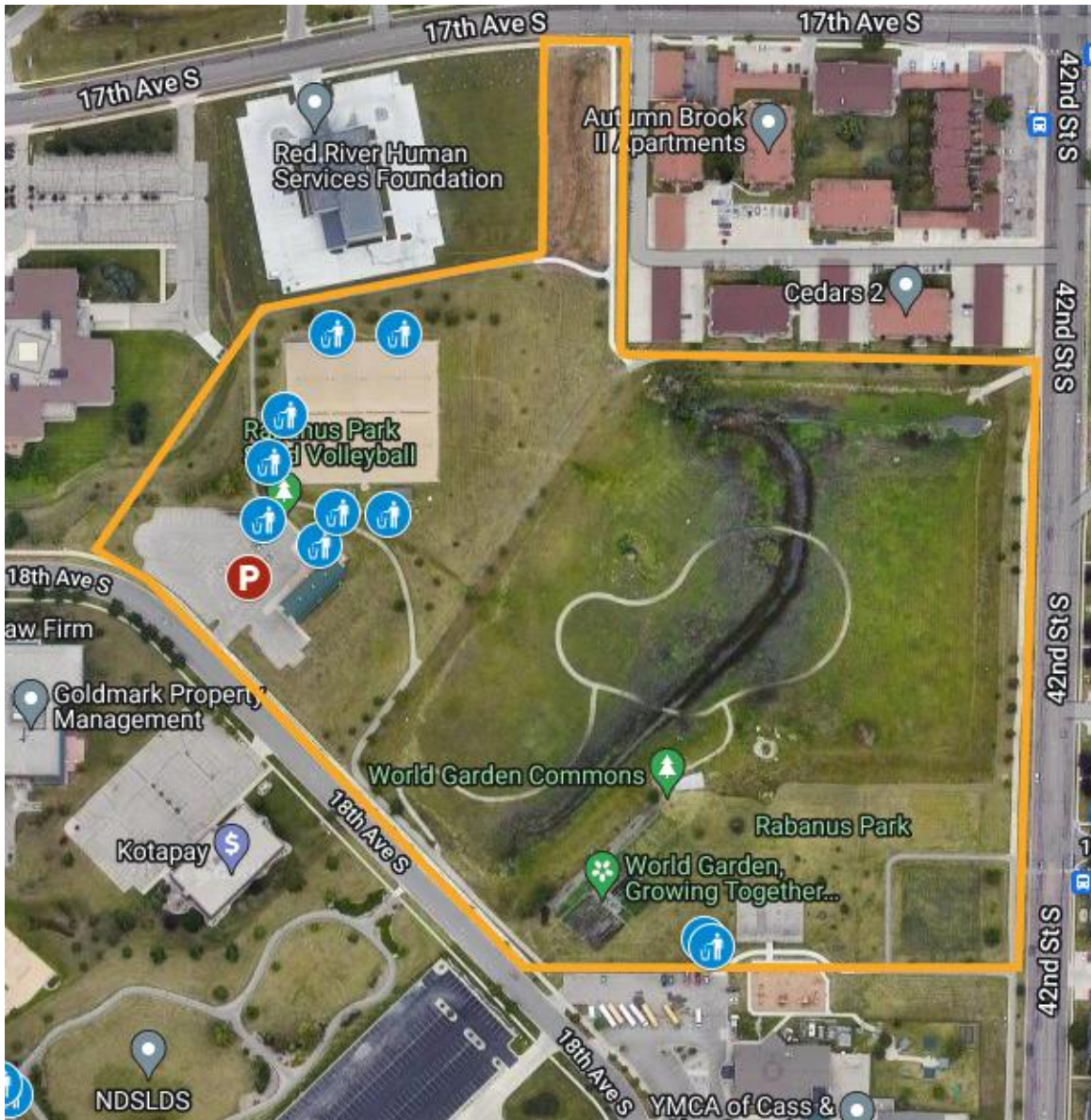


Garbage Cans

Garbage should be placed in the garbage cans throughout the park or left in a tied garbage bag next to the cans.



## Section 16



### Section 16- Rabanus Park

6470 19 St S, Fargo, ND

Rabanus Park is located in south Fargo west of 42<sup>nd</sup> Ave just north of the YMCA. There is a large low area that has a drainage ditch, native grasses and gravel trails.



Parking Area



Section Boundary

It is recommended that volunteers park on the west side of the park in the parking lot by the volleyball courts.



Garbage Cans

Garbage should be placed in the garbage cans throughout the park or left in a tied garbage bag next to the cans.



## Section 17



### Section 17- Orchard Glen

7606 Forest River Rd S, Fargo, ND

Orchard Glen is located in south Fargo east of South University on 76<sup>th</sup> Ave South. It is a community orchard with native grasses and multiple trails running through it.



Parking Area



Section Boundary

It is recommended that volunteers park on the west side of the park in the parking lot by the volleyball courts.



Garbage Cans

Garbage should be placed in the garbage cans throughout the park or left in a tied garbage bag next to the cans.



## Section 18



### Section 18- Forest River

115 Forest River Rd S, Fargo, ND

Forest River is located in south Fargo, take 76<sup>th</sup> Ave South east of South University until it turns into Forest River Road, follow this road south to the park. This park is heavily wooded and a popular birding area. It has trees, native grasses, ponds and multiple trails running through it.



Parking Area



Section Boundary

It is recommended that volunteers park on the west side of the park in the parking lot by the volleyball courts.

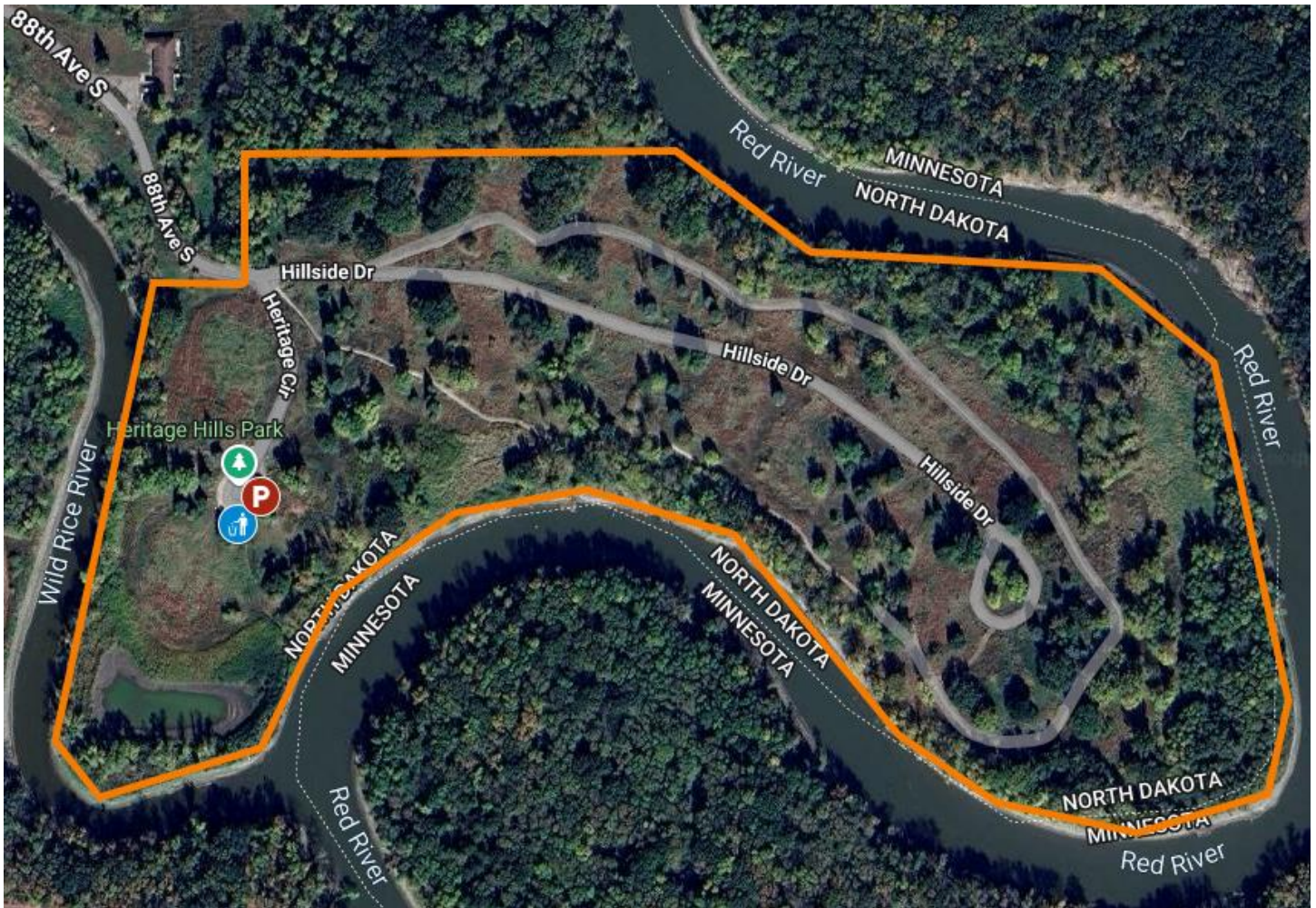


Garbage Cans

Garbage should be placed in the garbage cans throughout the park or left in a tied garbage bag next to the cans.



## Section 19



### Section 19- Heritage Hills

814 Heritage Cir S, Fargo, ND

Heritage Hills is located south of Fargo east of South University on 88<sup>th</sup> Ave South. It is covered in open native grass hills with trees bordering the river and has multiple trails running through it.



Parking Area



Section Boundary

It is recommended that volunteers park on the west side of the park in the parking lot by the volleyball courts.



Garbage Cans

Garbage should be placed in the garbage cans throughout the park or left in a tied garbage bag next to the cans.