

How Do Fish ...

SWIM?... Fish swim by flexing their bodies and tails. The tail is called the caudal (caw-dull) fin. As fish flex their bodies and tails, it moves them forward. They move their other fins, or tails, to change directions or move backward.

SMELL?... A fish's nose is two small openings on the head. Their sense of smell is very important to fish because it helps them find their food, and warns them of danger.

EAT?... Fish eat other creatures in the water, such as insects and other fish of all sizes. Fish swallow their food whole, and so don't have any teeth for chewing.

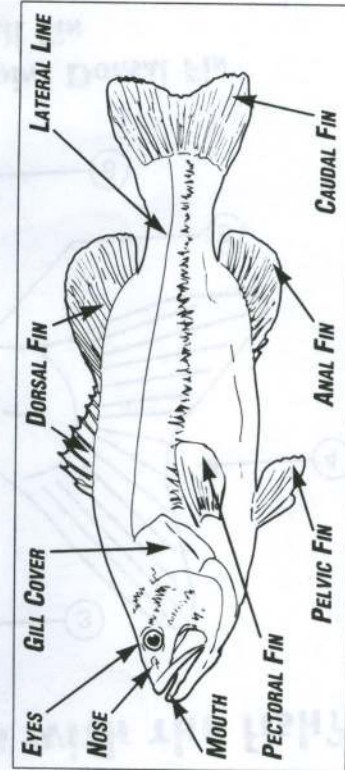
TASTE?.... Fish taste their food with taste buds that are on their tongues and also on the outside of their bodies. When a fish takes something into its mouth, but doesn't like the taste, it will spit it out.

BREATHE?... Fish don't have lungs, like people do, but they still need to breathe oxygen to stay alive. Fish get oxygen by filtering water through their gills, which serve the same purpose as lungs.

HEAR?... The line that runs down the sides of a fish, called the lateral line, enables it to detect sound waves or vibrations in the water. The fish learns that its enemies make certain sounds in the water, and its food also makes telltale sounds.

SEE?... Like some animals, fish have eyes on the sides of their heads. So they can see in front of them and on either side. They see best at close range in clear water, and can see things that aren't in the water. They can't see well behind them.

REPRODUCE?.... When the water is just the right temperature to help hatch the eggs, male fish fertilize the eggs as they are released out of the females into the water. The young of some fish are born alive out of the female, but that's rare.



How Do Fish ...

SWIM?... Fish swim by flexing their bodies and tails. The tail is called the caudal (caw-dull) fin. As fish flex their bodies and tails, it moves them forward. They move their other fins, or tails, to change directions or move backward.

SMELL?... A fish's nose is two small openings on the head. Their sense of smell is very important to fish because it helps them find their food, and warns them of danger.

EAT?... Fish eat other creatures in the water, such as insects and other fish of all sizes. Fish swallow their food whole, and so don't have any teeth for chewing.

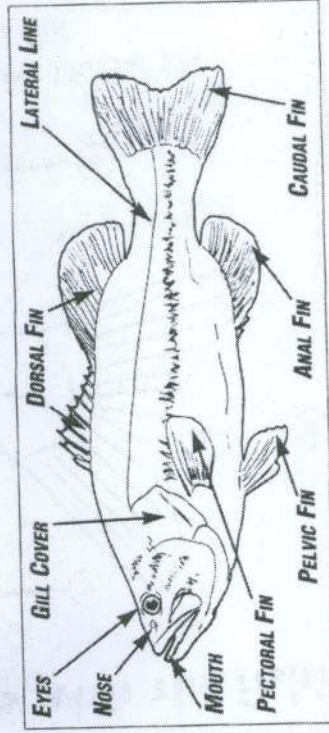
TASTE?.... Fish taste their food with taste buds that are on their tongues and also on the outside of their bodies. When a fish takes something into its mouth, but doesn't like the taste, it will spit it out.

BREATHE?... Fish don't have lungs, like people do, but they still need to breathe oxygen to stay alive. Fish get oxygen by filtering water through their gills, which serve the same purpose as lungs.

HEAR?... The line that runs down the sides of a fish, called the lateral line, enables it to detect sound waves or vibrations in the water. The fish learns that its enemies make certain sounds in the water, and its food also makes telltale sounds.

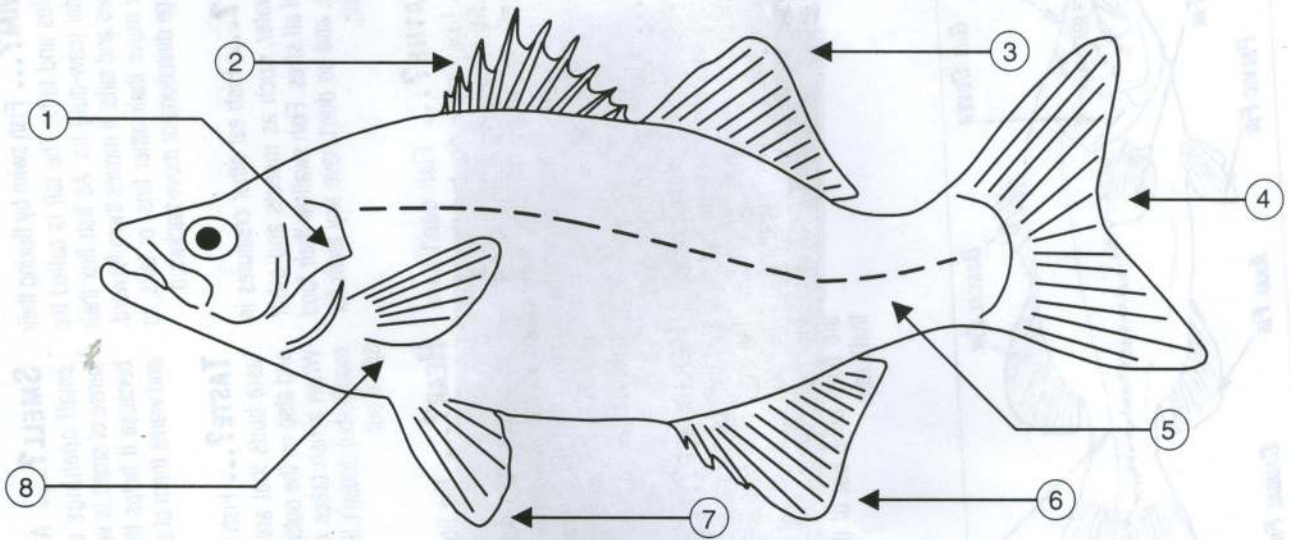
SEE?... Like some animals, fish have eyes on the sides of their heads. So they can see in front of them and on either side. They see best at close range in clear water, and can see things that aren't in the water. They can't see well behind them.

REPRODUCE?... When the water is just the right temperature to help hatch the eggs, male fish fertilize the eggs as they are released out of the females into the water. The young of some fish are born alive out of the female, but that's rare.



Answers: 1. Gill Cover, 2. Spiny Dorsal Fin, 3. Soft Dorsal Fin, 4. Tail Fin, 5. Lateral Line, 6. Anal Fin, 7. Pelvic Fin, 8. Pectoral Fin

CAN YOU MATCH THE DIFFERENT FISH PARTS WITH THE FISH?



ANAL FIN
GILL COVER

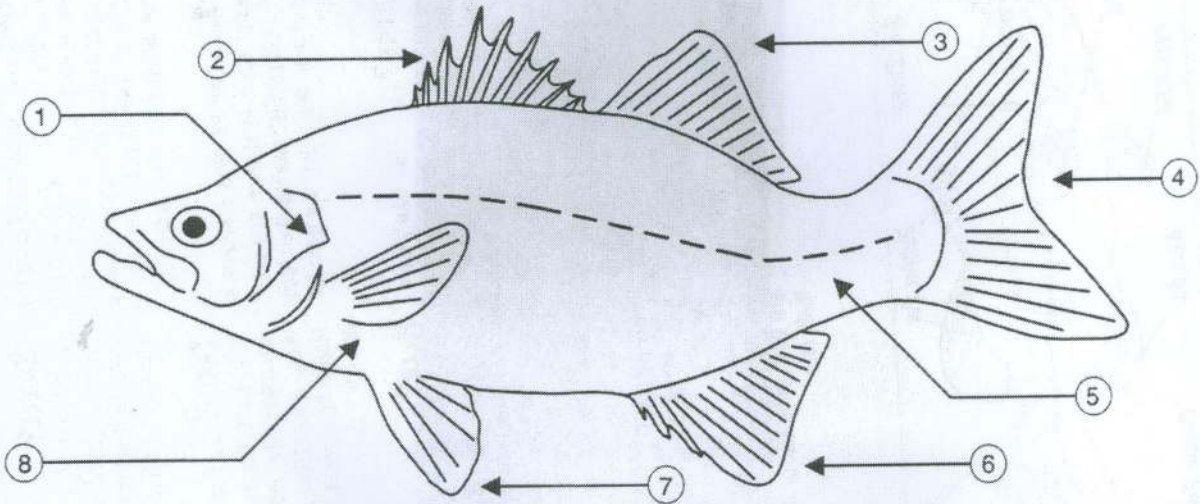
LATERAL LINE
PECTORAL FIN

PELVIC FIN
SOFT DORSAL FIN

SPINY DORSAL FIN
TAIL FIN

Answers: 1. Gill Cover, 2. Spiny Dorsal Fin, 3. Soft Dorsal Fin, 4. Tail Fin, 5. Lateral Line, 6. Anal Fin, 7. Pelvic Fin, 8. Pectoral Fin

CAN YOU MATCH THE DIFFERENT FISH PARTS WITH THE FISH?



ANAL FIN
GILL COVER

LATERAL LINE
PECTORAL FIN

PELVIC FIN
SOFT DORSAL FIN

SPINY DORSAL FIN
TAIL FIN